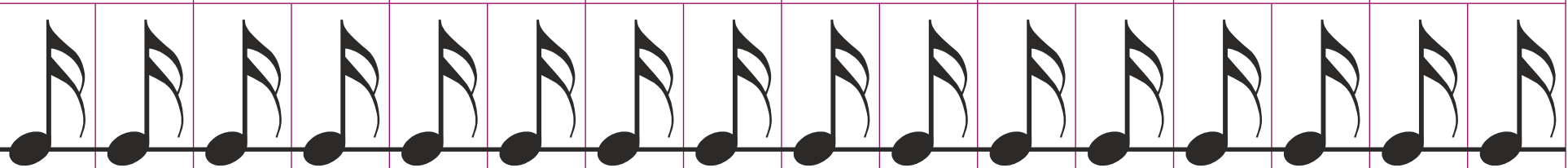
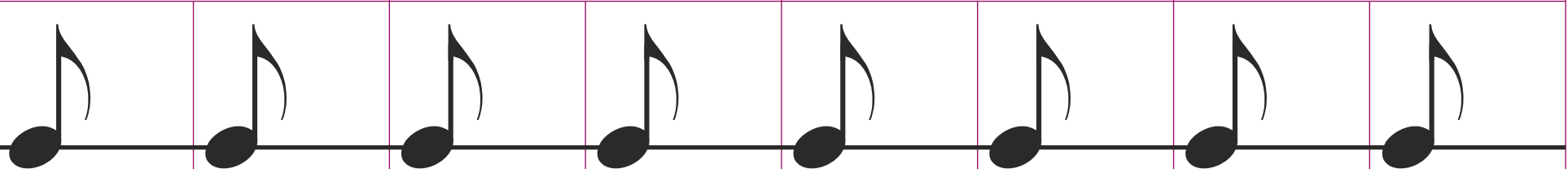
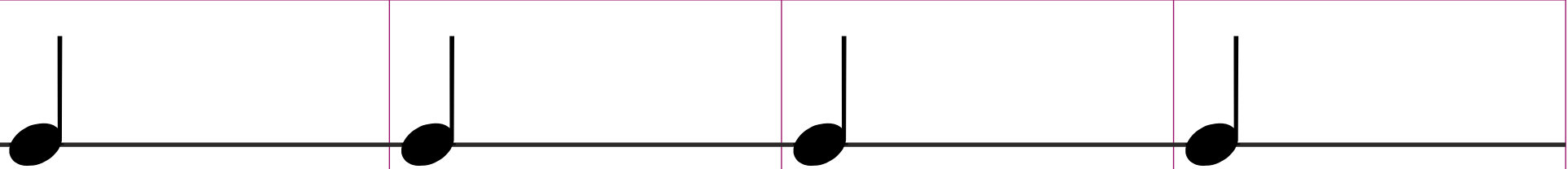
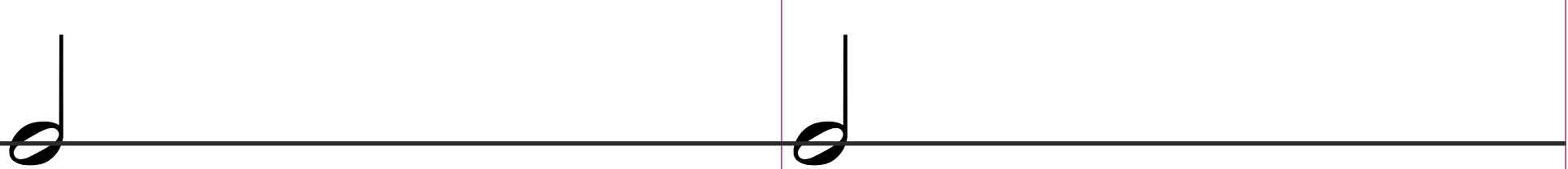


The image shows a musical notation pyramid on a five-line staff. The notes are arranged in seven rows, each with a different value:

- Row 1: 1 whole note
- Row 2: 2 half notes
- Row 3: 4 quarter notes
- Row 4: 8 eighth notes
- Row 5: 16 sixteenth notes
- Row 6: 2 dotted quarter notes
- Row 7: 2 dotted half notes

  
**NOTENPYRAMIDE**.de





  
**NOTENWERTE**

